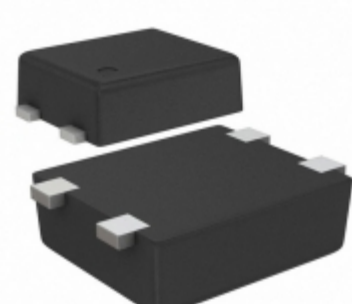


## S-1000N28-I4T1G



Images are for reference only.  
See Product Specifications for product details.  
Buy S-1000N28-I4T1G with confidence from  
Component-World.HK, 1 Year Warranty

**SII** SII Semiconductor Corporation

**Part Number:** [S-1000N28-I4T1G](#)

**Manufacturer:** [SII Semiconductor Corporation](#)

**Description:** IC VOLT DETECT N-CH 28V SNT-4A

**Data sheet:** [S-1000 Series](#)

**RoHS Status:** Lead free / RoHS Compliant

**Ship From:** Hong Kong

**Shipment Way:** DHL/Fedex/TNT/UPS/EMS

[Request For Quotation](#)

### PRODUCT PARAMETER

<b>Part Number</b>	S-1000N28-I4T1G	<b>Manufacturer</b>	<a href="#">SII Semiconductor Corporation</a>
<b>Description</b>	IC VOLT DETECT N-CH 28V SNT-4A	<b>Lead Free Status / RoHS Status</b>	Lead free / RoHS Compliant
<b>Quantity Available</b>	5521 pcs	<b>Data sheet</b>	<a href="#">S-1000 Series</a>
<b>Category</b>	<a href="#">Integrated Circuits (ICs)</a>	<b>Voltage - Threshold</b>	2.8V
<b>Type</b>	Voltage Detector	<b>Supplier Device Package</b>	SNT-4A
<b>Series</b>	S-1000	<b>Reset Timeout</b>	-
<b>Reset</b>	Active Low	<b>Packaging</b>	Tape & Reel (TR)
<b>Package / Case</b>	4-SMD, Flat Leads	<b>Output</b>	Open Drain or Open Collector
<b>Operating Temperature</b>	-40°C ~ 85°C (TA)	<b>Number of Voltages Monitored</b>	1
<b>Mounting Type</b>	Surface Mount	<b>Moisture Sensitivity Level (MSL)</b>	1 (Unlimited)
<b>Lead Free Status / RoHS Status</b>	Lead free / RoHS Compliant	<b>Detailed Description</b>	Supervisor Open Drain or Open Collector 1 Channel SNT-4A

Component-World.com is a Reliable Stocking Distributor of Electronic Components. We specialize in all SII Semiconductor Corporation series electronic components. We have 5521 pieces of SII Semiconductor Corporation S-1000N28-I4T1G in stock available now. Request a quote from electronics components distributor at Component-World.com, our sales team will contact you within 24 hours.  
RFQ Email: [info@Components-World.com](mailto:info@Components-World.com)

### RELATED PRODUCTS

	<b>Part#:</b> <a href="#">S-1000N26-M5T1G</a> <b>Description:</b> IC VOLT DETECT N-CH 26V SOT23-5	<b>Manufacturers:</b> <a href="#">SII Semiconductor Corporation</a>	<a href="#">RFQ</a>
	<b>Part#:</b> <a href="#">S-1000N26-N4T1G</a> <b>Description:</b> IC VOLT DETECT N-CH 26V SC-82AB	<b>Manufacturers:</b> <a href="#">SII Semiconductor Corporation</a>	<a href="#">RFQ</a>
	<b>Part#:</b> <a href="#">S-1000N27-M5T1U</a> <b>Description:</b> IC VOLT DETECTOR	<b>Manufacturers:</b> <a href="#">SII Semiconductor Corporation</a>	<a href="#">RFQ</a>
	<b>Part#:</b> <a href="#">S-1000N27-M5T1G</a> <b>Description:</b> IC VOLT DETECT N-CH 27V SOT23-5	<b>Manufacturers:</b> <a href="#">SII Semiconductor Corporation</a>	<a href="#">RFQ</a>
	<b>Part#:</b> <a href="#">S-1000N29-N4T1G</a> <b>Description:</b> IC VOLT DETECT N-CH 29V SC-82AB	<b>Manufacturers:</b> <a href="#">SII Semiconductor Corporation</a>	<a href="#">RFQ</a>
	<b>Part#:</b> <a href="#">S-1000N27-N4T1U</a> <b>Description:</b> IC VOLT DETECTOR	<b>Manufacturers:</b> <a href="#">SII Semiconductor Corporation</a>	<a href="#">RFQ</a>
	<b>Part#:</b> <a href="#">S-1000N26-N4T1U</a> <b>Description:</b> IC VOLT DETECTOR	<b>Manufacturers:</b> <a href="#">SII Semiconductor Corporation</a>	<a href="#">RFQ</a>
	<b>Part#:</b> <a href="#">S-1000N28-N4T1U</a> <b>Description:</b> IC VOLT DETECTOR	<b>Manufacturers:</b> <a href="#">SII Semiconductor Corporation</a>	<a href="#">RFQ</a>
	<b>Part#:</b> <a href="#">S-1000N28-I4T1U</a> <b>Description:</b> IC VOLT DETECT N-CH 28V SNT-4A	<b>Manufacturers:</b> <a href="#">SII Semiconductor Corporation</a>	<a href="#">RFQ</a>
	<b>Part#:</b> <a href="#">S-1000N27-I4T1U</a> <b>Description:</b> IC VOLT DETECT N-CH 27V SNT-4A	<b>Manufacturers:</b> <a href="#">SII Semiconductor Corporation</a>	<a href="#">RFQ</a>
	<b>Part#:</b> <a href="#">S-1000N29-I4T1U</a> <b>Description:</b> IC VOLT DETECT N-CH 29V SNT-4A	<b>Manufacturers:</b> <a href="#">SII Semiconductor Corporation</a>	<a href="#">RFQ</a>
	<b>Part#:</b> <a href="#">S-1000N28-M5T1G</a> <b>Description:</b> IC VOLT DETECT N-CH 28V SOT23-5	<b>Manufacturers:</b> <a href="#">SII Semiconductor Corporation</a>	<a href="#">RFQ</a>
	<b>Part#:</b> <a href="#">S-1000N29-M5T1U</a> <b>Description:</b> IC VOLT DETECTOR	<b>Manufacturers:</b> <a href="#">SII Semiconductor Corporation</a>	<a href="#">RFQ</a>
	<b>Part#:</b> <a href="#">S-1000N26-M5T1U</a> <b>Description:</b> IC VOLT DETECTOR	<b>Manufacturers:</b> <a href="#">SII Semiconductor Corporation</a>	<a href="#">RFQ</a>
	<b>Part#:</b> <a href="#">S-1000N27-N4T1G</a> <b>Description:</b> IC VOLT DETECT N-CH 27V SC-82AB	<b>Manufacturers:</b> <a href="#">SII Semiconductor Corporation</a>	<a href="#">RFQ</a>
	<b>Part#:</b> <a href="#">S-1000N29-M5T1G</a> <b>Description:</b> IC VOLT DETECT N-CH 29V SOT23-5	<b>Manufacturers:</b> <a href="#">SII Semiconductor Corporation</a>	<a href="#">RFQ</a>
	<b>Part#:</b> <a href="#">S-1000N27-I4T1G</a> <b>Description:</b> IC VOLT DETECT N-CH 27V SNT-4A	<b>Manufacturers:</b> <a href="#">SII Semiconductor Corporation</a>	<a href="#">RFQ</a>
	<b>Part#:</b> <a href="#">S-1000N28-N4T1G</a> <b>Description:</b> IC VOLT DETECT N-CH 28V SC-82AB	<b>Manufacturers:</b> <a href="#">SII Semiconductor Corporation</a>	<a href="#">RFQ</a>
	<b>Part#:</b> <a href="#">S-1000N29-I4T1G</a> <b>Description:</b> IC VOLT DETECT N-CH 29V SNT-4A	<b>Manufacturers:</b> <a href="#">SII Semiconductor Corporation</a>	<a href="#">RFQ</a>
	<b>Part#:</b> <a href="#">S-1000N28-M5T1U</a> <b>Description:</b> IC VOLT DETECTOR	<b>Manufacturers:</b> <a href="#">SII Semiconductor Corporation</a>	<a href="#">RFQ</a>

### Related keywords for S-1000N28-I4T1G

<a href="#">SII Semiconductor Corporation S-1000N28-I4T1G</a>	<a href="#">S-1000N28-I4T1G distributor</a>	<a href="#">S-1000N28-I4T1G supplier</a>	<a href="#">S-1000N28-I4T1G price</a>
<a href="#">S-1000N28-I4T1G download datasheet</a>	<a href="#">S-1000N28-I4T1G datasheet</a>	<a href="#">S-1000N28-I4T1G stock</a>	<a href="#">buy S-1000N28-I4T1G</a>
<a href="#">SII Semiconductor Corporation S-1000N28-I4T1G</a>			